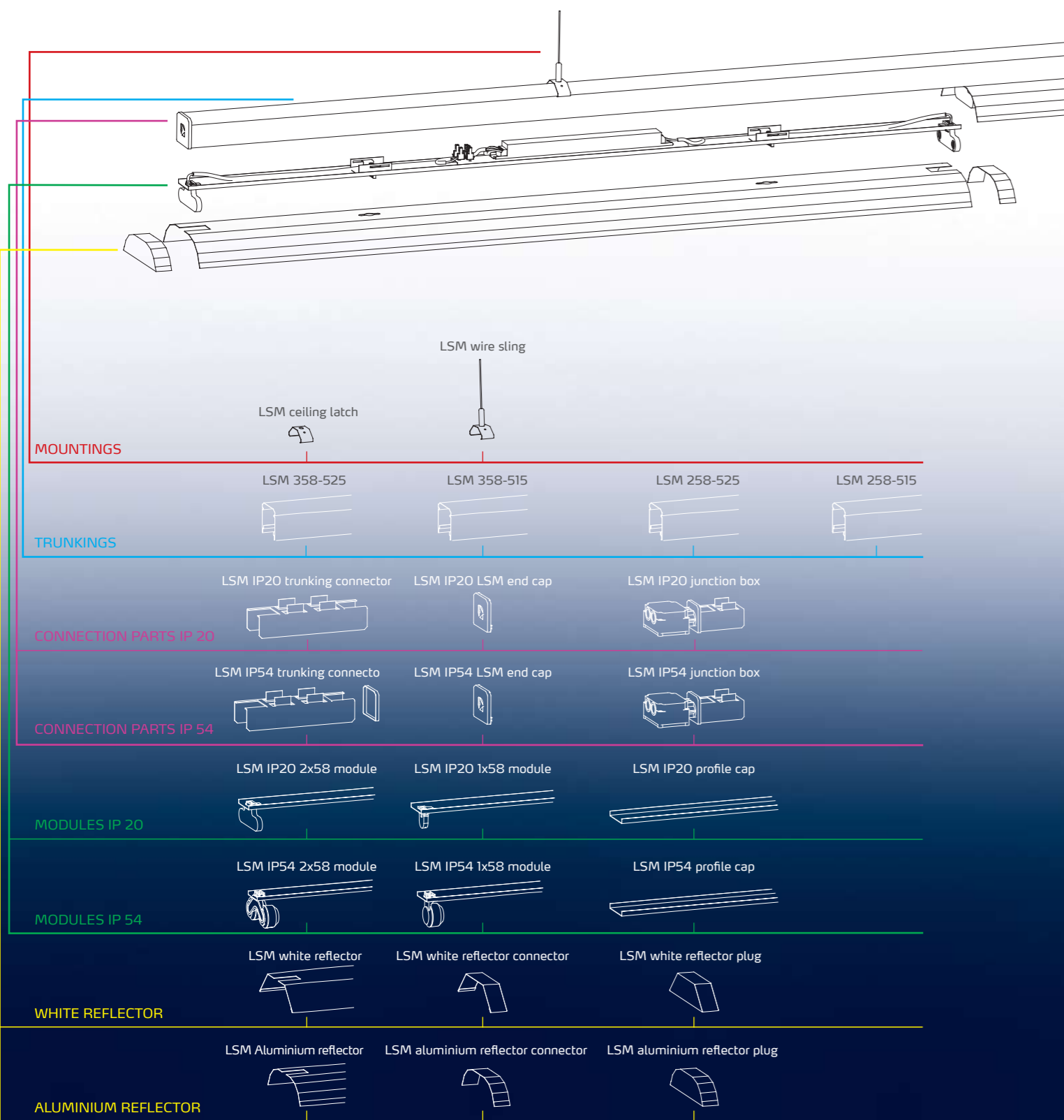


To make fast configuration of LSM system we're asking you to use configurator which is available on our website. Thanks to it it's possible to easily calculate available LSM lengths with complying of required parameters.



LIGHT FOR OFFICES



LIGHT FOR MARINE



LIGHT FOR INDUSTRY



LIGHT FOR STREET



LIGHT FOR HAZARDOUS AREAS



LIGHT FOR SPORT



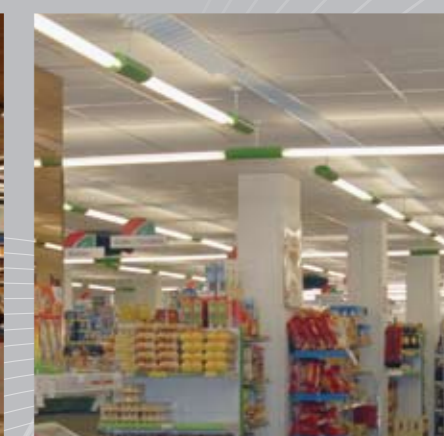
LIGHTING SYSTEM LSM

POLAM-REM S.A.  
80-531 Gdańsk  
Sucha 25 Str.



ph. +48 58 520 74 00  
ph. +48 58 520 74 63  
fax: +48 58 343 26 29

polamrem@polam-rem.com.pl  
www.polam-rem.com.pl



LIGHTING SYSTEM  
**LSM**

LIGHTING SYSTEM LSM



# lighting system LSM

Continuous lighting system is a standard in lighting large commercial and industrial areas. Thanks to it it's possible to ensure high and regular light flux on required spaces. Polam Rem LSM system fulfill these needs. It was designed for fast and easy montage. Plain construction and high configurability allows for quick matching to client's needs.

## LSM 20

Continuous lighting system for T8 fluorescent lamps, 2x58W module max. Trunking and electrical module are made of zinc coated, powder painted steel sheet. Trunking connector is made of zinc coated steel sheet. End caps and lampholders are made of plastic. Luminaire is mounted on the ceiling using many types of mountings.

**Optional versions:** electrical module with 3h emergency unit.  
**Additional equipment:** white or aluminium reflector.  
**Use:** suitable to light commercial facilities such as hipermarkets, discount or construction shops.



## LSM 54

Continuous lighting system for T8 fluorescent lamps, 2x58W module max. Trunking and electrical module are made of zinc coated, powder painted steel sheet. Trunking connector is made of zinc coated steel sheet. End caps and lampholders are made of plastic. Every part of the system has special seals which allows to fulfill IP54 requirements. Luminaire is mounted on the ceiling using many types of mountings.

**Optional versions:** electrical module with 3h emergency unit.  
**Additional equipment:** white or aluminium reflector.  
**Use:** suitable to light industrial facilities such as assembly lines, warehouses, logistic and distribution centers.

